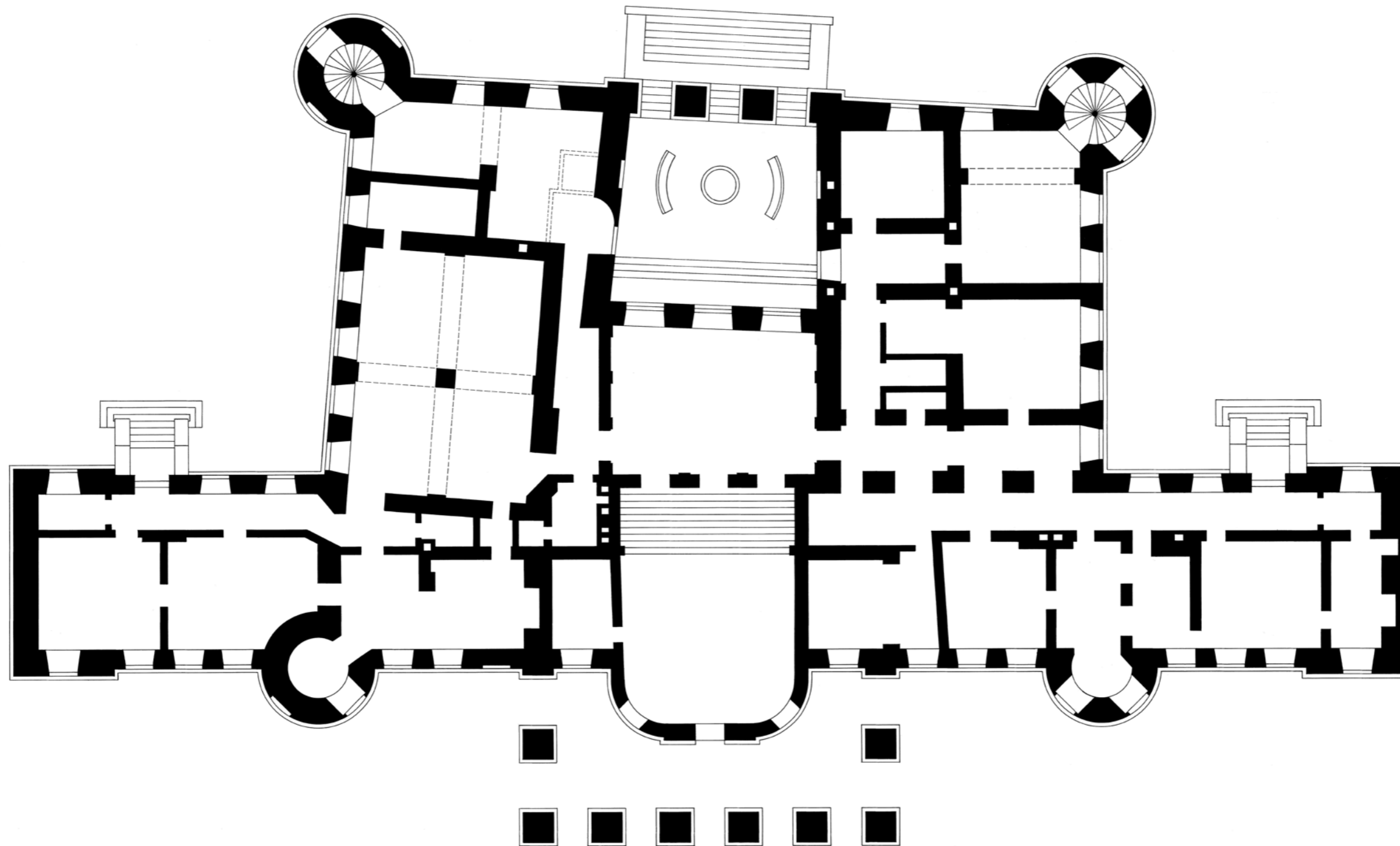


Schloss zu Putbus, 1772-1865, Rügen

Architekt: Johann Gottfried Steinmeyer

Rekonstruktion und Modell in Alabastergips, M 1:50

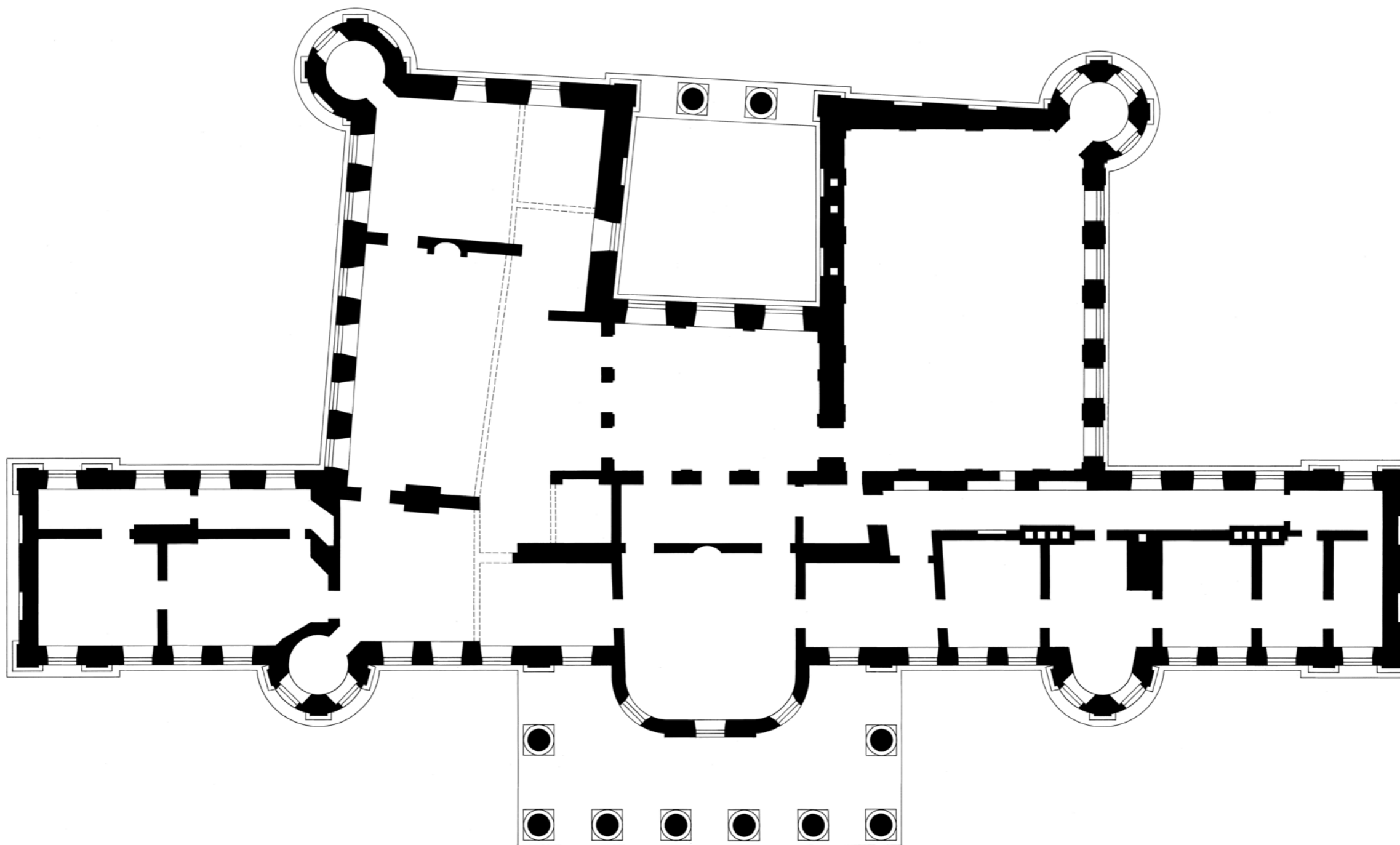


SCHLOSS ZU PUTBUS 1772-1865 - ERDGESCHOSS



M 1:100 0 5 10 15 20 25 30 35 40 METER

GEZ. B.GRIMM 2002

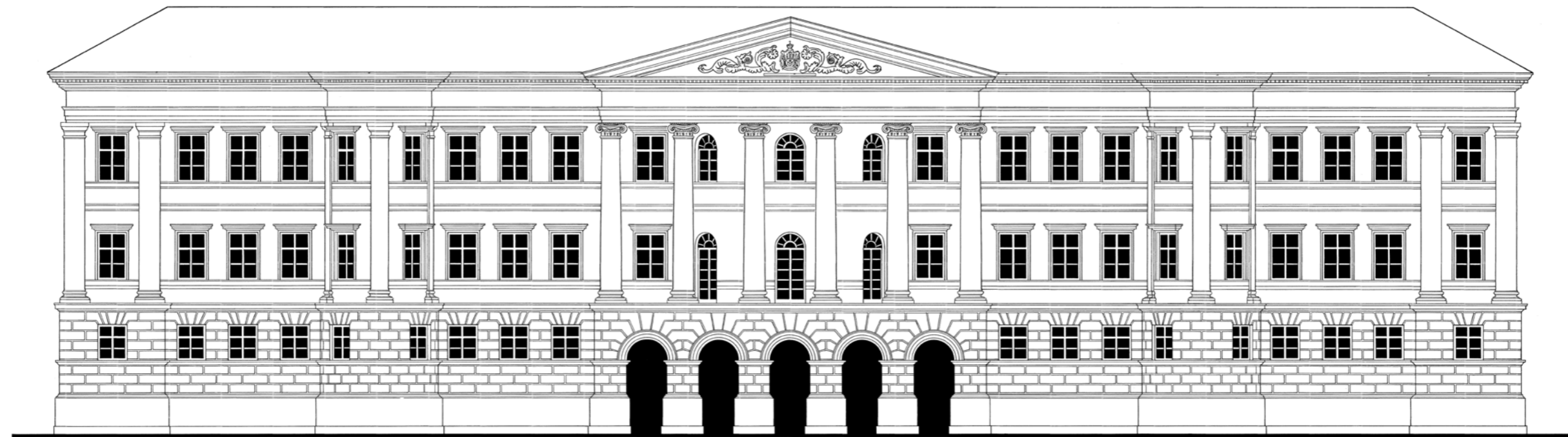
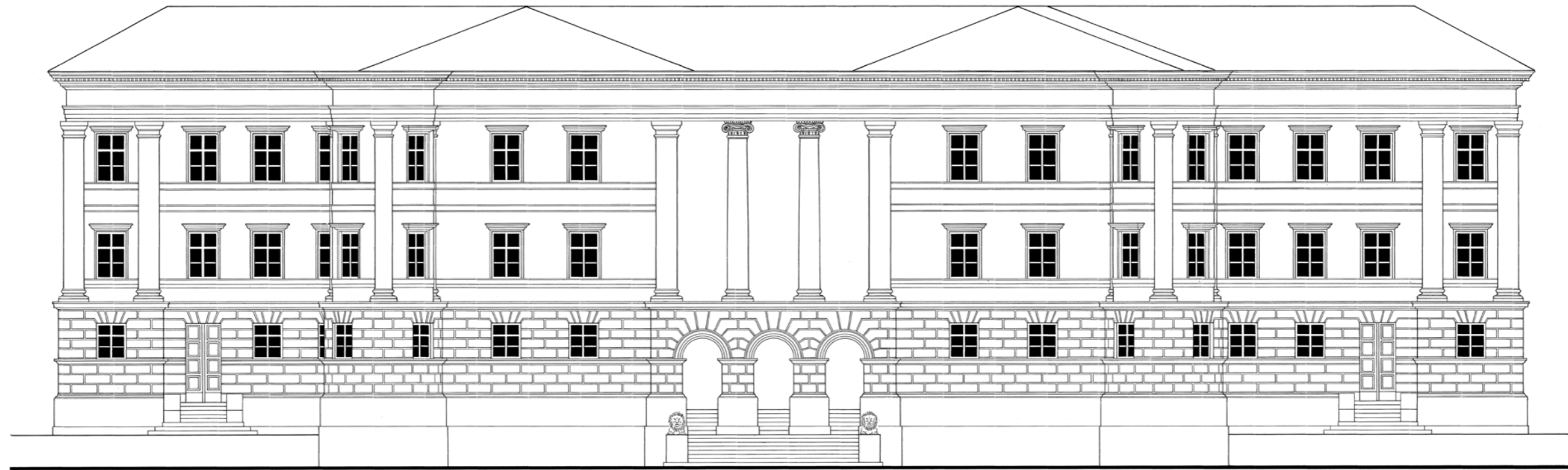


SCHLOSS ZU PUTBUS 1772-1865 - 1.OBERGESCHOSS



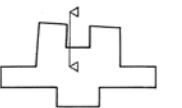
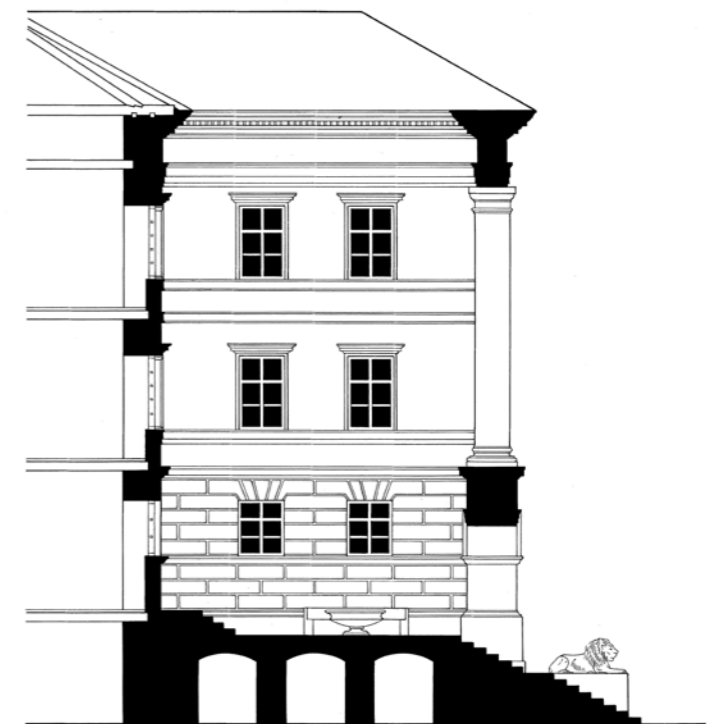
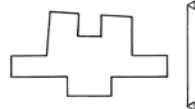
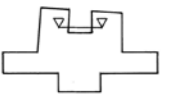
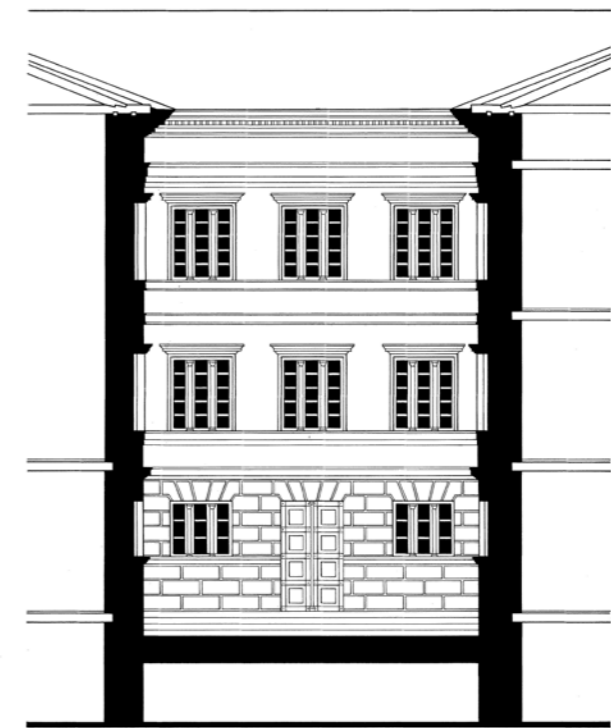
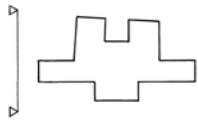
M 1:100 0 5 10 15 20 25 30 35 40 METER

GEZ. B.GRIMM 2002



SCHLOSS ZU PUTBUS 1772-1865 - ANSICHTEN

M 1:100 0 5 10 15 20 25 30 35 40 METER



SCHLOSS ZU PUTBUS 1772-1865 - ANSICHTEN UND SCHNITTE

M 1:100 0 5 10 15 20 25 30 35 40 METER

